



■ Features :

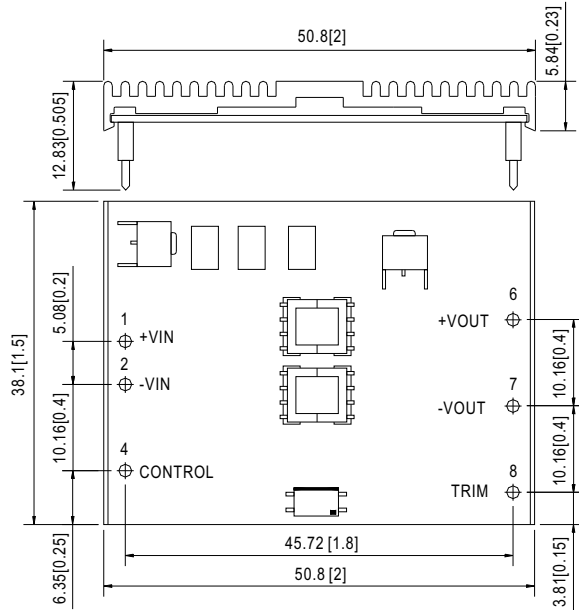
- Wide 4:1 DC input range
- In/out capacitance 1000pF
- Protections: Short circuit/Over load/Over voltage
- 500~1500VDC I/O isolation for D/D
- Built-in EMI filter
- Cooling by free air convection
- Built-in remote ON-OFF control
- 100% full load burn-in test
- Fixed switching frequency at 450KHz
- Lost cost
- High reliability
- 2 years warranty

SPECIFICATION

MODEL	ASD15H-12S3	ASD15H-12S5	ASD15H-12S12	ASD15H-12S15	ASD15H-48S3	ASD15H-48S5	ASD15H-48S12	ASD15H-48S15		
OUTPUT	DC VOLTAGE	3.3V	5V	12V	15V	3.3V	5V	12V	15V	
	RATED CURRENT	3.75A	3A	1.25A	1A	3.75A	3A	1.25A	1A	
	CURRENT RANGE	0.18 ~ 3.75A	0.15 ~ 3A	0.06 ~ 1.25A	0.05 ~ 1A	0.18 ~ 3.75A	0.15 ~ 3A	0.06 ~ 1.25A	0.05 ~ 1A	
	RATED POWER	12.37W	15W	15W	15W	12.37W	15W	15W	15W	
	RIPPLE & NOISE (max.) Note.2	100mVp-p(25% ~ 100% load) for 3.3V only				75mVp-p(25% ~ 100% load)				
	VOLTAGE TOLERANCE Note.3	±2.0%								
	LINE REGULATION	±1.0% at 10% ~ 100% load								
LOAD REGULATION	±1.0% at 10% ~ 100% load									
INPUT	RATED DC INPUT	12VDC				48VDC				
	VOLTAGE RANGE	9.2 ~ 36VDC(50V surge 10ms)				18 ~ 72VDC(100V surge 10ms)				
	EFFICIENCY (Typ.)	72%	74%	80%	80%	76%	80%	83%	83%	
	DC CURRENT	1.8A/12VDC				0.4A/48VDC				
	SHUTDOWN IDLE CURRENT	15mA								
PROTECTION	OVER LOAD	Above 105% rated output power Protection type : Over power limiting, recovers automatically after fault condition is removed								
	OVER VOLTAGE(CLAMP)	5.61 ~ 6.93V	5.5 ~ 7.5V	13.8 ~ 18V	17.25 ~ 22.5V	5.61 ~ 6.93V	5.5 ~ 7.5V	13.8 ~ 18V	17.25 ~ 22.5V	
	SHORT CIRCUIT Note.4	Recovers automatically after fault condition is removed								
FUNCTION	ON/OFF CONTROL	Logic "1" OPEN: ON, logic "0" GND: OFF								
ENVIRONMENT	WORKING TEMP.	-25 ~ +71°C								
	WORKING HUMIDITY	0% ~ 95% RH max. Heatsink temp. 110°C								
	STORAGE TEMP., HUMIDITY	-40 ~ +125°C, 0 ~ 95% RH								
	TEMP. COEFFICIENT	±0.03%/°C (0~50°C)								
SAFETY & EMC	SAFETY STANDARDS	Design refer to UL1950, TUV EN60950								
	ISOLATION VOLTAGE	I/P-O/P: 0.5KVDC for ASD15H-12S series				1.5KVDC for ASD15H-48S series				
	ISOLATION RESISTANCE	I/P-O/P: 100M Ohms/500VDC								
	EMI CONDUCTION & RADIATION	Compliance to FCC Part15 J								
OTHERS	MTBF	438K hrs min. MIL-HDBK-217F (25°C)								
	DIMENSION	38.1*50.8*9.52mm (1.5**2**0.375") (L*W*H)								
	PACKING	0.03Kg; 180pcs/6.4Kg/0.97CUFT								
NOTE	1. All parameters NOT specially mentioned are measured at 12,48VDC input, rated load and 25°C of ambient temperature. 2. Ripple & noise are measured at 20MHz of bandwidth by using a 12" twisted pair-wire terminated with a 0.1uf & 47uf parallel capacitor. 3. Tolerance : includes set up tolerance, line regulation and load regulation. 4. Short circuit not more than 30 second.									

Mechanical Specification

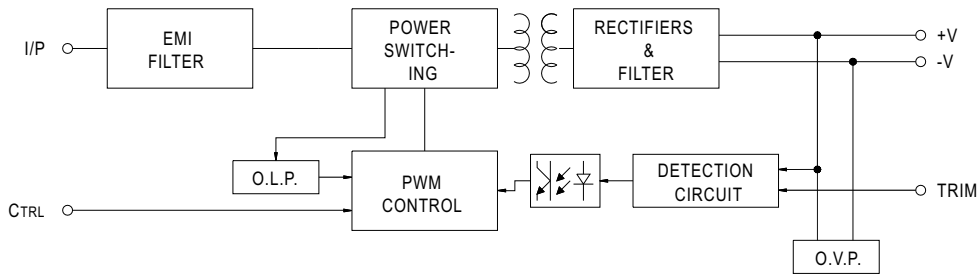
Unit:mm[inch]



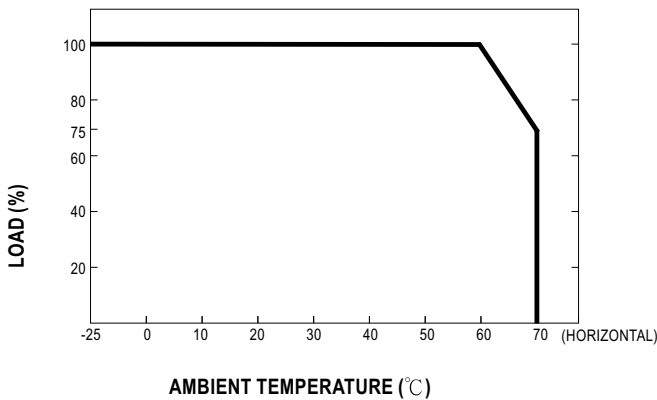
Pin. No Assignment

Pin No.	Assignment	Pin No.	Assignment
1	+VIN	6	+VOUT
2	-VIN	7	-VOUT
3,5	No Pin	8	TRIM
4	CONTROL		

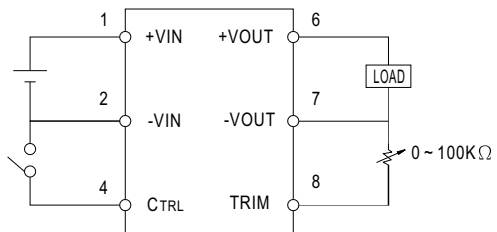
Block Diagram



Derating Curve



ON/OFF Control & Output Trim



- CONTROL INPUT.....PIN4
- CONTROL COMMON.....PIN2
- LOGIC COMPATIBILITY.....CMOS OR OPEN COLLECTOR TTL
- CONTROL VOLTAGE
- ON.....+5.5VDC min OR OPEN CIRCUIT
- OFF.....+2.5VDC max. OR SHORT TO PIN2